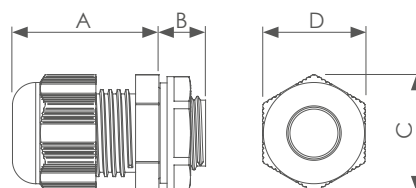





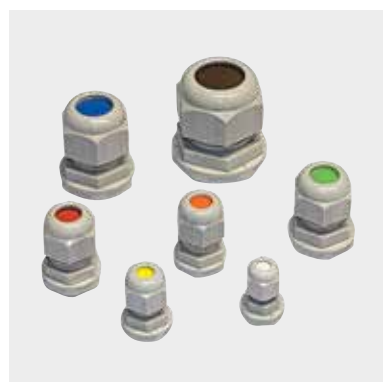
## Pressacavi IP68 con controdado Cable glands IP68 with locknut

**Grado di protezione:** IP68 5 bar (30 min) IP66  
**Materiale pressacavo:** Poliammide 6  
**Materiale guarnizione:** Cloroprene  
**Temperatura d'esercizio:** -20°C +100°C, intermittente -30 +150°C  
**Certificazioni:** VDE, CSA, UL  
**Conformità:** CE, RoHS 2015/863/UE  
**Protection degree:** IP68 5 bar (30 min) IP66  
**Cable glands material:** Polyamide 6  
**Sealing material:** Chloroprene  
**Working temperature:** -20°C +100°C, intermittent -30 +150°C  
**Approvals:** VDE, CSA, UL  
**Compliance:** CE, RoHS 2015/863/UE



### SISTEMA DI SERRAGGIO ANTIVIBRAZIONE ANTIVIBRATION CLAMPING SYSTEM

Dimensione filettatura Thread size	Lunghezza filettatura Thread length	Campo di serraggio Clamping range			Dimensioni Dimensions				
					A mm	B mm	C mm	D mm	
								Corpo Body	Testa Head
M12	8	3-6,5	-	<b>124M1201B</b>	25,3	8	17	15	15
M16	8	4-8	-	<b>124M1601B</b>	27,4	8	21,7	19	19
M20	10	6-12	-	<b>124M2001B</b>	27	10	27	24	24
M25	8	11-17	-	<b>124M2501B</b>	37,7	8	37,7	29	29
M32	10	15-21	-	<b>124M3201B</b>	42,3	10	41	36	36
M40	10	19-28	-	<b>124M4001B</b>	47,4	10	52,4	46	46
PG7	8	3 - 6,5	<b>124P0701B</b>	<b>124P0701BE</b>	25,3	8	17	15	15
PG9	8	4 - 8	<b>124P0901B</b>	<b>124P0901BE</b>	27,4	8	21,7	19	19
PG11	8	5 - 10	<b>124P1101B</b>	<b>124P1101BE</b>	32,2	8	25	22	22
PG13,5	9	6 - 12	<b>124P1301B</b>	<b>124P1301BE</b>	32,4	10	27	24	24
PG16	10	10 - 14	<b>124P1601B</b>	<b>124P1601BE</b>	31,9	10	30,9	27	27
PG21	11	13 - 18	<b>124P2101B</b>	<b>124P2101BE</b>	38,4	11	37,2	33	33
PG29	11	18 - 25	<b>124P2901B</b>	<b>124P2901BE</b>	43,3	11	47,1	42	42



I pressacavi 124P..01B sono forniti con un tappo di protezione colorato.

The cable glands 124P .. 01B are supplied with coloured protection cap.

Tutti i pressacavi con codice finale B e BE (passo PG e Metrico) sono forniti con controdado e sono imballati in sacchetti con foro Euroslot.

The cable glands with final code B or BE (PG and Metric thread) are supplied with locknut and packaging with bag with Euroslot hole.



## Pressacavi IP68 Cable glands IP68

<p><b>Grado di protezione:</b> IP68 5 bar (30 min) IP66  <b>Materiale pressacavo:</b> Poliammide 6  <b>Materiale guarnizione:</b> Cloroprene  <b>Temperatura d'esercizio:</b> -20°C +100°C, intermittente -30 +150°C  <b>Certificazioni:</b> VDE, CSA, UL  <b>Conformità:</b> CE, RoHS 2015/863/UE  <b>124M...EX03:</b> per ambienti a rischio di esplosione EEX e II livello "e"  <b>Protection degree:</b> IP68 5 bar (30 min) IP66  <b>Cable glands material:</b> Polyamide 6  <b>Sealing material:</b> Chloroprene  <b>Working temperature:</b> -20°C +100°C, intermittent -30 +150°C  <b>Approvals:</b> VDE, CSA, UL  <b>Compliance:</b> CE, RoHS 2015/863/UE  <b>124M...EX03:</b> for explosive areas EEX e II safety level "e"</p>	
-----------------------------------------------------------------------------------------------------------------------------------------------------------------------------------------------------------------------------------------------------------------------------------------------------------------------------------------------------------------------------------------------------------------------------------------------------------------------------------------------------------------------------------------------------------------------------------------------------------------------------------------------------------------------------------------------------------------------------------------------------------------------------------------------	--

### SISTEMA DI SERRAGGIO ANTIVIBRAZIONE ANTIVIBRATION CLAMPING SYSTEM

Dimensione filettatura Thread size	Lunghezza filettatura Thread length	Campo di serraggio Clamping range				Dimensioni Dimensions				
						A mm	B mm	C mm	D mm	
									Corpo Body	Testa Head
M12	8	3-6,5	Grigio Grey RAL7035	Nero Black RAL9005	Nero Black RAL9005	25,3	8	17	15	15
M16	8	4-8	<b>350M1601</b>	<b>350M1603</b>	<b>124M16EX03</b>	27,4	8	21,7	19	19
M20	10	6-12	<b>350M2001</b>	<b>350M2003</b>	<b>124M20EX03</b>	27	10	27	24	24
M25	8	11-17	<b>350M2501</b>	<b>350M2503</b>	<b>124M25EX03</b>	37,7	8	37,7	29	29
M32	10	15-21	<b>350M3201</b>	<b>350M3203</b>	<b>124M32EX03</b>	42,3	10	41	36	36
M40	10	19-28	<b>350M4001</b>	<b>350M4003</b>	<b>124M40EX03</b>	47,4	10	52,4	46	46
M50	18	30-38	<b>350M5001</b>	<b>350M5003</b>	-	54,8	18	67,8	60	60
M63	18	34-44	<b>350M6301</b>	<b>350M6303</b>	-	54,9	18	72,4	65	65
NPT3/8"	15	5-10	<b>124NPT3801</b>	-	-	32,2	15	25	22	22
NPT1/2"	15	6-12	<b>124NPT1201</b>	-	-	32,4	15	27	24	24
NPT3/4"	15	13-18	<b>124NPT3401</b>	-	-	38,4	15	37,2	33	33
NPT1"	18	18-25	<b>124NPT101</b>	-	-	43,3	18	47,1	42	42
PG7	8	3-6,5	<b>350P0701</b>	-	-	25,3	8	17	15	15
PG9	8	4-8	<b>350P0901</b>	-	-	27,4	8	21,7	19	19
PG11	8	5-10	<b>350P1101</b>	-	-	32,2	8	25	22	22
PG13,5	9	6-12	<b>350P1301</b>	-	-	32,4	10	27	24	24
PG16	10	10-14	<b>350P1601</b>	-	-	31,9	10	30,9	27	27
PG21	11	13-18	<b>350P2101</b>	-	-	38,4	11	37,2	33	33
PG29	11	18-25	<b>350P2901</b>	-	-	43,3	11	47,1	42	42
PG36	13	22-32	<b>350P3601</b>	-	-	52,4	13	59,6	53	53
PG42	13	30-38	<b>350P4201</b>	-	-	54,8	13	67,8	60	60
PG48	14	34-44	<b>350P4801</b>	-	-	54,9	14	72,4	65	65

## Pressacavi con proteggicavo IP68 Cable glands with cable protection IP68

<p><b>Grado di protezione:</b> IP68 5 bar (30 min) IP66  <b>Materiale pressacavo:</b> Poliammide 6  <b>Materiale guarnizione:</b> Cloroprene  <b>Temperatura d'esercizio:</b> -20°C +100°C, intermittente -30 +150°C  <b>Certificazioni:</b> VDE, CSA, UL  <b>Conformità:</b> CE, RoHS 2015/863/UE  <b>Protection degree:</b> IP68 5 bar (30 min) IP66  <b>Cable glands material:</b> Polyamide 6  <b>Sealing material:</b> Chloroprene  <b>Working temperature:</b> -20°C +100°C, intermittent -30 +150°C  <b>Approvals:</b> VDE, CSA, UL  <b>Compliance:</b> CE, RoHS 2015/863/UE</p>	
-------------------------------------------------------------------------------------------------------------------------------------------------------------------------------------------------------------------------------------------------------------------------------------------------------------------------------------------------------------------------------------------------------------------------------------------------------------------------------------------------------------------------------------------------------------------------------------------------------------------------------------	--

Dimensione filettatura Thread size	Lunghezza filettatura Thread length	Campo di serraggio Clamping range	 Grigio Grey RAL7035	 Nero Black RAL9005	Dimensioni Dimensions			 D mm	
					A mm	B mm	C mm	Corpo Body	Testa Head
M16	10	5-10	<b>124SM1601</b>	<b>124SM1603</b>	83,2	10	25,1	22	22
M20	10	10-14	<b>124SM2001</b>	<b>124SM2003</b>	106,4	10	30,5	27	27
M25	10	13-18	<b>124SM2501</b>	<b>124SM2503</b>	118,9	10	37,8	33	33

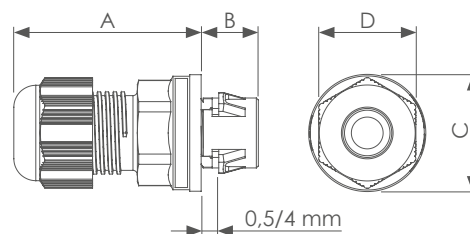
PG7	8	3-6,5	-	<b>124SP0703</b>	58	8	16,6	15	15
PG9	8	4-8	-	<b>124SP0903</b>	68,4	8	21,5	19	19
PG11	8	5-10	-	<b>124SP1103</b>	83,2	8	25,1	22	22
PG13,5	10	6-12	-	<b>124SP1303</b>	96,5	10	27,6	24	24
PG16	10	10-14	-	<b>124SP1603</b>	106,4	10	30,5	27	27

## Pressacavi IP68 in OTTONE Cable glands IP68 of BRASS

<p><b>Grado di protezione:</b> IP68 5 bar (30 min) IP66  <b>Materiale pressacavo:</b> Ottone nichelato  <b>Materiale guarnizione:</b> Cloroprene  <b>Temperatura d'esercizio:</b> -20°C +100°C, intermittente -40 +150°C  <b>Certificazioni:</b> VDE, CSA, UL  <b>Conformità:</b> CE, RoHS 2015/863/UE  <b>Protection degree:</b> IP68 5 bar (30 min) IP66  <b>Cable glands material:</b> nickel plated Brass  <b>Sealing material:</b> Chloroprene  <b>Working temperature:</b> -20°C +100°C, intermittent -40 +150°C  <b>Approvals:</b> VDE, CSA, UL  <b>Compliance:</b> CE, RoHS 2015/863/UE</p>								
Dimensione filettatura Thread size	Lunghezza filettatura Thread length	Campo di serraggio Clamping range		Dimensioni Dimensions				
				A mm	B mm	C mm	D mm	
	mm	Ø mm					Corpo Body	Testa Head
M12	6	3-6,5	<b>2532M12A</b>	24	6	15,5	14	14
M16	7	4-8	<b>2532M16A</b>	25,5	7	20	17	18
M20	8	6-12	<b>2532M20A</b>	26,5	8	24,5	22	22
M25	8	10-14	<b>2532M25A</b>	30	8	30	24	27
M32	9	13-18	<b>2532M32A</b>	35	9	37,5	30	34
M40	9	18-25	<b>2532M40A</b>	40,5	9	48,5	40	43

## Pressacavi IP68 con inserimento rapido SLIP-IN Cable glands IP68 with SLIP-IN quick insertion

**Grado di protezione:** IP68 5 bar (30 min) IP66  
**Materiale pressacavo:** Poliammide 6  
**Materiale guarnizione:** Cloroprene  
**Temperatura d'esercizio:** -20°C +100°C, intermittente -30 +150°C  
**Spessore di fissaggio:** minimo 0,5 mm e massimo 4 mm  
**Certificazioni:** VDE, CSA, UL  
**Conformità:** CE, RoHS 2015/863/UE  
**Protection degree:** IP68 5 bar (30 min) IP66  
**Cable glands material:** Polyamide 6  
**Sealing material:** Chloroprene  
**Working temperature:** -20°C +100°C, intermittent -30 +150°C  
**Fixing thickness:** minimum 0.5 mm and maximum 4 mm  
**Approvals:** VDE, CSA, UL  
**Compliance:** CE, RoHS 2015/863/UE



Dimensione foro Enclosure hole	Campo di serraggio Clamping range	Foro di fissaggio Insertion hole		Dimensioni Dimensions				
				A mm	B mm	C mm	D mm	
mm	∅ mm	∅ mm	Grigio Grey RAL7035				Corpo Body	Testa Head
16,2 - 16,4	5-10	16	<b>124M1601C</b>	44,5	9	26,5	22	22
20,2 - 20,4	6-12	20	<b>124M2001C</b>	43,5	9	30,3	24	24
25,2 - 25,4	11-17	25	<b>124M2501C</b>	45,5	9	36,3	29	29
32,2 - 32,4	15-21	32	<b>124M3201C</b>	51,5	9	43,2	36	36
40,2 - 40,4	19-28	40	<b>124M4001C</b>	58	13,2	55,2	46	46



Inserire il pressacavo nel foro. Il pressacavo è fornito di guarnizione in gomma per garantire l'IP68.

Insert the cable gland in the hole. The cable gland is supplied with rubber seal to guarantee the IP68.



Premere a fondo fino allo scatto. Questo sistema innovativo riduce notevolmente i tempi d'installazione.

Press the cable gland until it clicks. This innovative system significantly reduces installation times.



Premere e girare contemporaneamente la base del pressacavo fino al completo bloccaggio.

Simultaneously press and turn the base of the cable gland until completely locked.

## Pressacavi IP68 con inserimento rapido SLIP-IN in OTTONE Cable glands IP68 with SLIP-IN quick insertion of BRASS

<p><b>Grado di protezione:</b> IP68 5 bar (30 min) IP66  <b>Materiale pressacavo:</b> Ottone Nichelato  <b>Materiale guarnizione:</b> Cloroprene  <b>Temperatura d'esercizio:</b> -20°C +100°C, intermittente -30 +150°C  <b>Spessore di fissaggio:</b> min 0,5 mm, max 4 mm  <b>Certificazioni:</b> VDE, CSA, UL  <b>Conformità:</b> CE, RoHS 2015/863/UE  <b>Protection degree:</b> IP68 5 bar (30 min) IP66  <b>Cable glands material:</b> Nickel-plated brass  <b>Sealing material:</b> Chloroprene  <b>Working temperature:</b> -20°C +100°C, intermittent -30 +150°C  <b>Fixing thickness:</b> min 0.5 mm, max 4 mm  <b>Approvals:</b> VDE, CSA, UL  <b>Compliance:</b> CE, RoHS 2015/863/UE</p>								
Dimensione foro Enclosure hole	Campo di serraggio Clamping range	Foro di fissaggio Insertion hole		Dimensioni Dimensions				
				A mm	B mm	C mm	D mm	
mm	∅ mm	∅ mm					Corpo Body	Testa Head
16,2 - 16,4	5-10	16	<b>2532M16C</b>	47	9	28,3	20	20
20,2 - 20,4	6-12	20	<b>2532M20C</b>	46	9	32,3	22	22
25,2 - 25,4	11-17	25	<b>2532M25C</b>	48	9	38,5	27	27
32,2 - 32,4	15-21	32	<b>2532M32C</b>	56,5	9	45,5	34	34
40,2 - 40,4	19-28	40	<b>2532M40C</b>	64	13,2	59	43	43

## Attrezzo per disassemblare i pressacavi SLIP-IN Tool to disassemble SLIP-IN glands

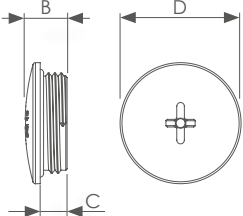
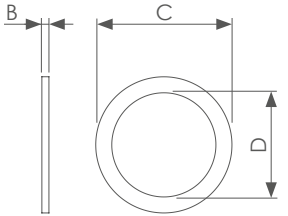


Dimensione Size	Articolo Item				
M16	<b>124M16DT</b>				
M20	<b>124M20DT</b>				
M25	<b>124M25DT</b>				
M32	<b>124M32DT</b>				
M40	<b>124M40DT</b>				

## Controdadi Locknuts

<p><b>Materiale:</b> Poliammide 6 (Plastica) Ottone nichelato <b>Temperatura d'esercizio:</b> -20°C +100°C, intermittente -30 +150°C <b>Conformità:</b> CE, RoHS 2015/863/UE <b>Material:</b> Polyamide 6 (Plastic) Nickel plated Brass <b>Working temperature:</b> -20°C +100°C, intermittent -30 +150°C <b>Compliance:</b> CE, RoHS 2015/863/UE</p>							
Dimensione filettatura Thread size	Controdado Lock nut			Dimensioni Dimension			
				Plastica Plastic	Ottone Brass	Plastica Plastic	Ottone Brass
	Plastica grigia Grey plastic RAL7035	Plastica Nera Black plastic RAL9005	Ottone Brass	A mm	A mm	E mm	E mm
M12	<b>3420M12</b>	<b>3420M1203</b>	<b>420M12</b>	5	2,8	18	15
M16	<b>3420M16</b>	<b>3420M1603</b>	<b>420M16</b>	5	3	22	19
M20	<b>3420M20</b>	<b>3420M2003</b>	<b>420M20</b>	6	3,5	26	24
M25	<b>3420M25</b>	<b>3420M2503</b>	<b>420M25</b>	6	4	32	30
M32	<b>3420M32</b>	<b>3420M3203</b>	<b>420M32</b>	7	5	41	36
M40	<b>3420M40</b>	<b>3420M4003</b>	<b>420M40</b>	7	5	50	46
M50	<b>3420M50</b>	<b>3420M5003</b>	<b>420M50</b>	8	5	60	60
M63	<b>3420M63</b>	<b>3420M6303</b>	<b>420M63</b>	8	6	75	70
NPT3/8"	<b>3420NPT3801</b>			7		22	
NPT1/2"	<b>3420NPT1201</b>			7		27	
NPT3/4"	<b>3420NPT3401</b>			7		33	
NPT1"	<b>3420NPT101</b>			7		41	
PG7	<b>3420P07</b>			5		19	
PG9	<b>3420P09</b>			5		22	
PG11	<b>3420P11</b>			5		24	
PG13,5	<b>3420P13</b>			6		27	
PG16	<b>3420P16</b>			6		30	
PG21	<b>3420P21</b>			7		36	
PG29	<b>3420P29</b>			7		46	
PG36	<b>3420P36</b>			8		60	
PG42	<b>3420P42</b>			8		65	
PG48	<b>3420P48</b>			8		70	

## Tappi filettati e guarnizioni Screw plugs and sealing rings

<p><b>Materiale:</b> Poliammide 6  <b>Temperatura d'esercizio:</b> -20°C +100°C  intermittente -30 +150°C  <b>Conformità:</b> CE, RoHS 2015/863/UE  <b>Material:</b> Polyamide 6  <b>Working temperature:</b> -20°C +100°C  intermittent -30 +150°C  <b>Compliance:</b> CE, RoHS 2015/863/UE</p>	<p><b>Materiale:</b> gomma Dutral  <b>Temperatura d'esercizio:</b> -40°C +100°C  <b>Conformità:</b> CE, RoHS 2015/863/UE  <b>Material:</b> Dutral rubber  <b>Working temperature:</b> -40°C +100°C  <b>Compliance:</b> CE, RoHS 2015/863/UE</p>
------------------------------------------------------------------------------------------------------------------------------------------------------------------------------------------------------------------------------------------------------------------------------------------------------------------------------	---------------------------------------------------------------------------------------------------------------------------------------------------------------------------------------------------------------------------------------------------------------------

Dimensione filettatura Thread size	Tappo filettato Screw plug				Guarnizione Sealing ring			
	 Plastica grigia Grey plastic RAL7035	B mm	C mm	D mm	 Gomma nera Black rubber	B mm	C mm	D mm
M12	<b>514M12</b>	6	9	18	<b>986DM12</b>	1,5	18	11
M16	<b>514M16</b>	6	9,4	22	<b>986DM16</b>	1,5	21	15
M20	<b>514M20</b>	6	9	26	<b>986DM20</b>	1,5	27	19
M25	<b>514M25</b>	6	10	32	<b>986DM25</b>	1,5	34	24
M32	<b>514M32</b>	8	12	41	<b>986DM32</b>	1,5	40	32
M40	<b>514M40</b>	8	12,5	50	<b>986DM40</b>	1,5	51	39
M50	<b>514M50</b>	10	13,7	60	<b>986DM50</b>	1,5	60	48
M63	<b>514M63</b>	12	16,5	73	<b>986DM63</b>	1,5	72	62
PG7	<b>514P07</b>	6	9	15	<b>986DP07</b>	1,5	17	12
PG9	<b>514P09</b>	6	9	19,5	<b>986DP09</b>	1,5	20	15
PG11	<b>514P11</b>	6	9	22	<b>986DP11</b>	1,5	23	18
PG13,5	<b>514P13</b>	6	9	24,7	<b>986DP13</b>	1,5	25	20
PG16	<b>514P16</b>	6	9,4	27	<b>986DP16</b>	1,5	28	22
PG21	<b>514P21</b>	8	12	33	<b>986DP21</b>	1,5	38	28
PG29	<b>514P29</b>	8	11,2	44	<b>986DP29</b>	1,5	45	37
PG36	<b>514P36</b>	10	13,7	55	<b>986DP36</b>	1,5	56	47
PG42	<b>514P42</b>	10	16	62	<b>986DP42</b>	1,5	62	54
PG48	<b>514P48</b>	12	18,5	69	<b>986DP48</b>	1,5	69	59