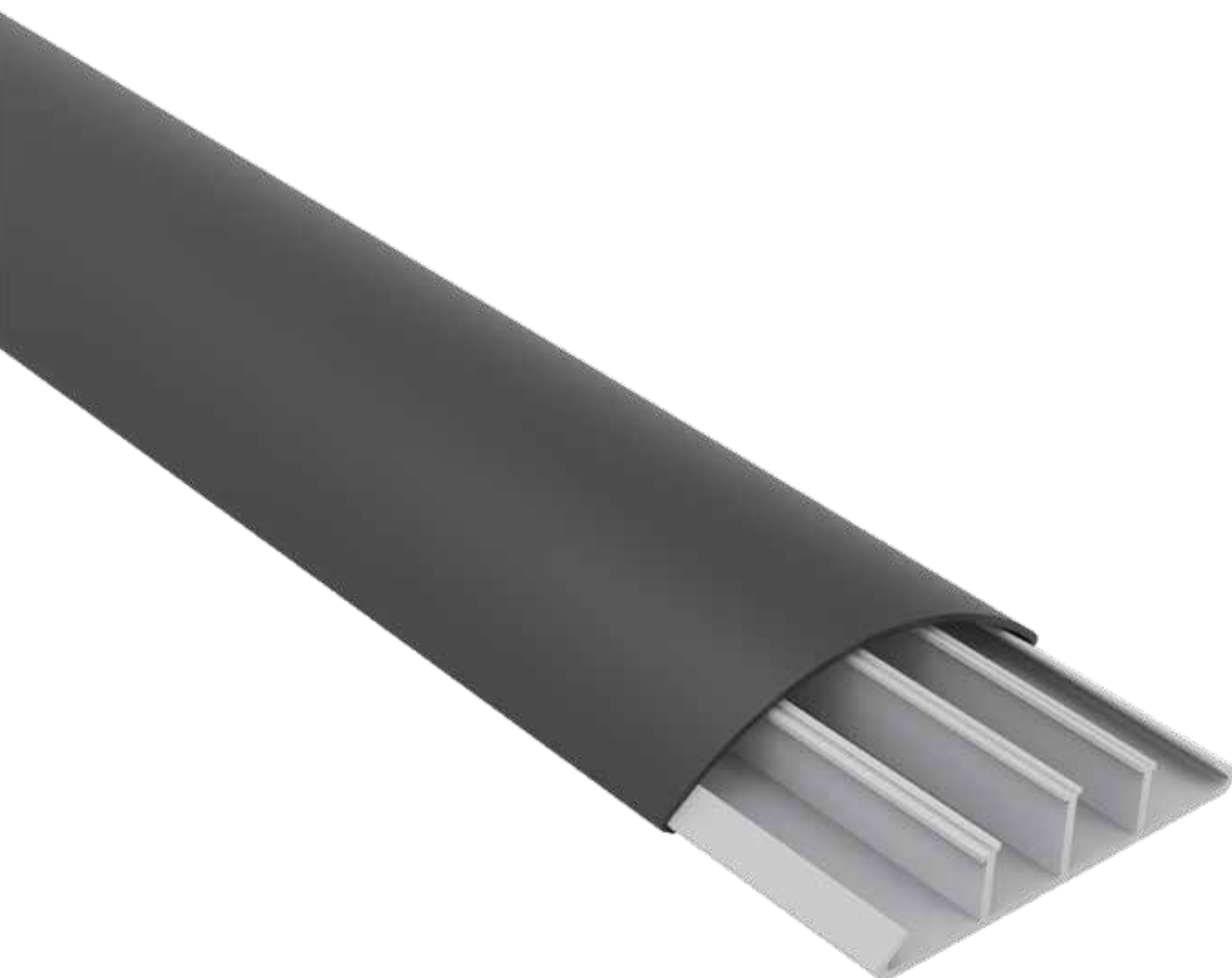


# CAMBER

Sistema di canali sopra-pavimento  
per applicazioni a pavimento e parete

Over-floor trunking system  
for floor and wall applications





## Caratteristiche Tecniche

- Canale in PVC o alluminio ed accessori in ABS
- Apertura coperchio con attrezzo
- Resistenza all'urto IK 08 (5J)
- Grado di protezione IP40
- Tensione nominale 750V
- Temperatura di utilizzo -15°C +60°C

## Technical Features

- Trunking of PVC or Aluminium and accessories of ABS
- Cover disassembling with tool
- Mechanical protection IK 08 (5J)
- Protection degree IP40
- Rated voltage 750V
- Working temperature -15°C +60°C

## Riferimenti a Norme

- La linea è conforme alla norma CEI EN 50085-2-2 (Canale)
- La linea è conforme alla norma CEI EN 50085-2-4 (Torrette)
- La linea è conforme alla Direttiva Rohs 2 2015/863/EU
- La linea è conforme alla Direttiva B.T. 2009/95/CE

## Norms Reference

- The system complied to CEI EN 50085-2-2 (Trunking)
- The system complied to CEI EN 50085-2-4 (Turrets)
- The system complied to Rohs 2 2015/863/EU
- The system complied to L.V.D. 2009/95/CE

## Marchi e Certificazioni

- Marchio IMQ riferimento n° CA02.02902 (Canale)
- Marchio IMQ riferimento n° CA02.01017 (Torrette)
- Marcatura CE

## Marks and Certifications

- Mark IMQ reference n° CA02.02902 (Trunking)
- Mark IMQ reference n° CA02.01017 (Turrets)
- CE Marking

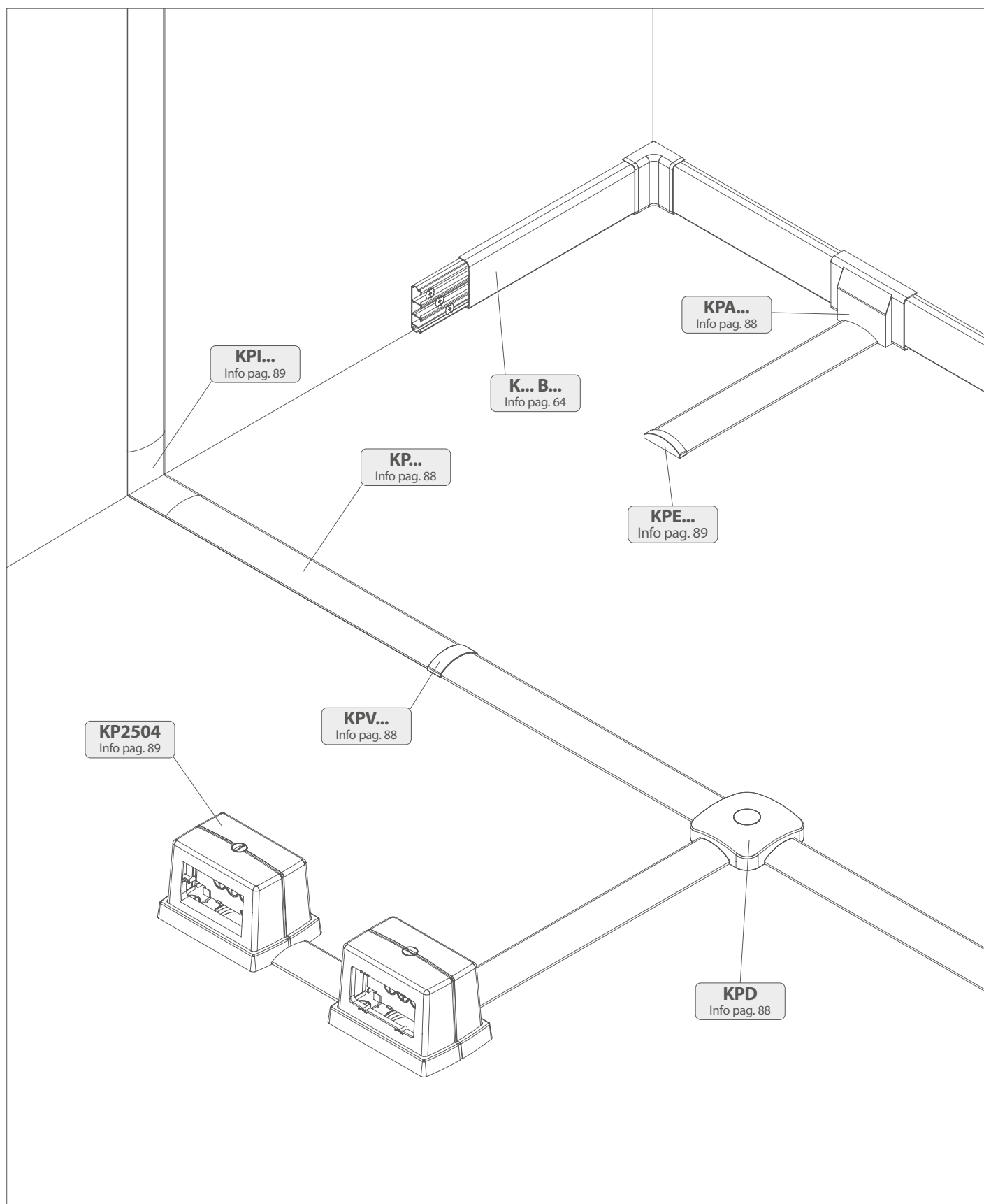
## Colori disponibili

- Grigio RAL7030, Bianco RAL9010, Nero RAL7021, Marrone RAL8014, verniciato Alluminio

## Available colours

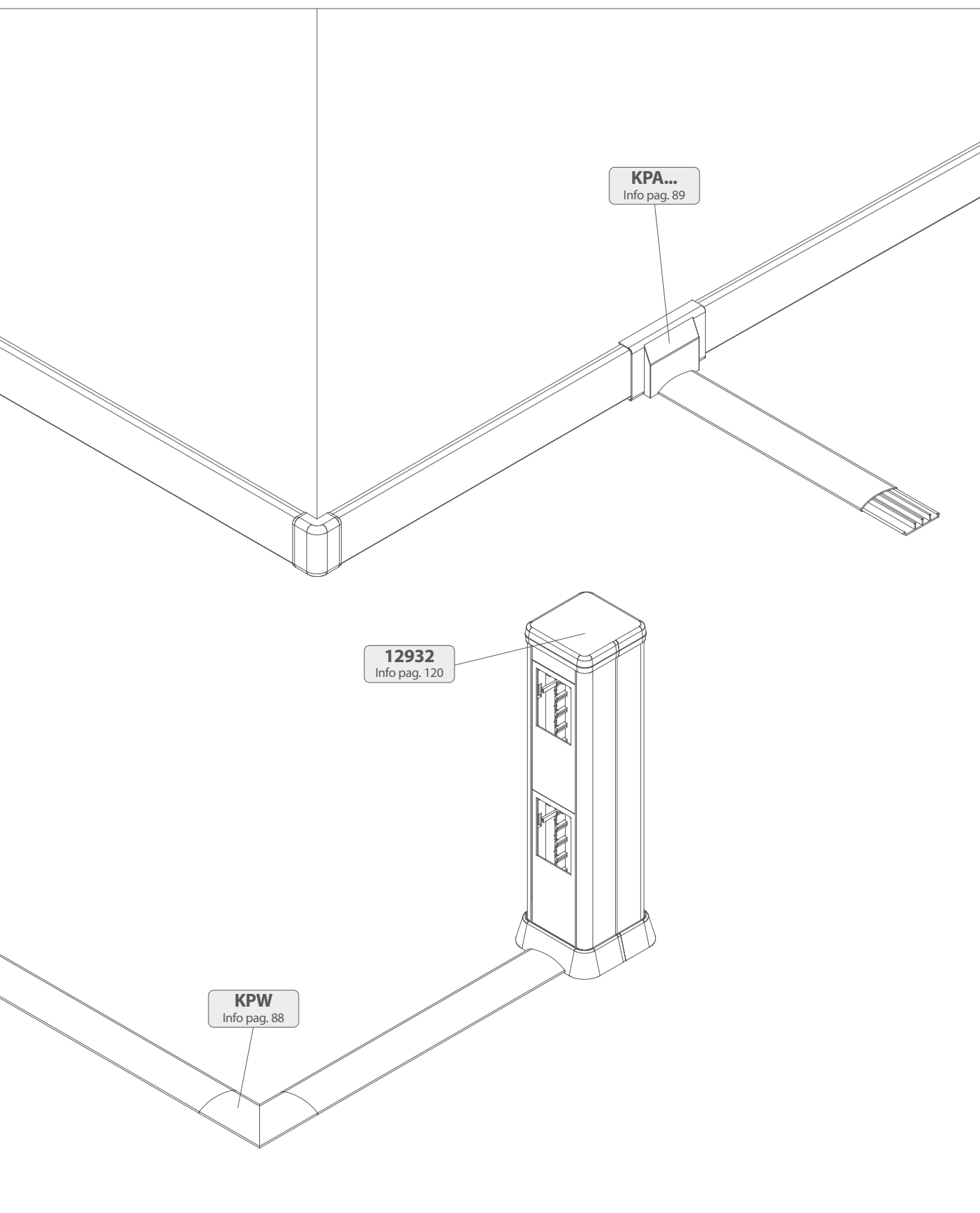
- Grey RAL7030, White RAL9010, Nero RAL7021, Brown RAL8014, Aluminium painted

## Esempio applicativo accessori Example of accessories application



**Colori disponibili:** (.1) Grigio RAL7030, (.2) Nero RAL7021, (.3) Bianco RAL9010,  
(.5) Marrone RAL8014, (.AL) Verniciato alluminio, (A) Alluminio anodizzato

**Available colours:** (.1) Grey RAL7030, (.2) Nero RAL7021, (.3) White RAL9010,  
(.5) Brown RAL8014, (.AL) Aluminium painted, (A) Aluminium anodized




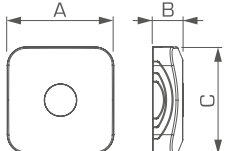
**CAMBER canali porta cavi a pavimento e parete, in pvc e alluminio**  
CAMBER trunkings for floor and wall installation, pvc and aluminium

Profilo Profile	Dimensioni Dimensions	Scomparti Section	Canale Trunking	Curva piana Flat angle	Curva piana preformata Preformed flat angle	Coprigiunto Cover joint
	35x10 mm	2	<b>KP1031.1</b> <b>KP1031.3</b> <b>KP1031.5</b>		KPW1031.1 KPW1031.3	KPV35.1 KPV35.3
	50x12 mm	3	<b>KP1252.1</b> <b>KP1252.3</b> <b>KP1252.5</b> <b>KP1252A</b>		KPW1252.1 KPW1252.3 KPW1252.5 KPW1252A	KPV50.1 KPV50.3 KPV50.AL
	75x18 mm	4	<b>KP1873.1</b> <b>KP1873.3</b> <b>KP1873.5</b> <b>KP1873.2</b> <b>KP1873A</b>	KPW1873.1 KPW1873.3 KPW1873.AL	KPW1873.2 KPW1873.5 KPW1873A	KPV75.1 KPV75.2 KPV75.3 KPV75.AL


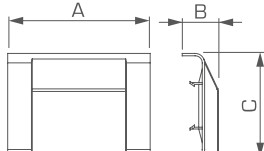
**Dati tecnici dei canali**  
Trunking data table

Articolo Item	Scomparti Sections	Dimensioni Dimensions	Sezioni scomparti mm <sup>2</sup> Compartments cross section mm <sup>2</sup>				
			1	2	3	4	TOT
KP1031	2	35 x 10 mm	70	70			140
KP1252	3	50 x 12 mm	65	95	65		225
KP1873	4	75 x 18 mm	120	165	165	120	570

**Scatola di derivazione**  
Derivation box

Articolo Item	A mm	B mm	C mm
<b>KPD</b>	100	30	100
			

**Derivazione da battiscopa**  
Derivation from skirting trunkings

Articolo Item	A mm	B mm	C mm
<b>KPA70</b>	120	30	72
<b>KPA100</b>	160	38	103
			

**Colori disponibili:** (.1) Grigio RAL7030, (.2) Nero RAL7021, (.3) Bianco RAL9010, (.5) Marrone RAL8014, (.AL) Verniciato alluminio, (A) Alluminio anodizzato (KR) Verniciato Corten

**Available colours:** (.1) Grey RAL7030, (.2) Black RAL7021, (.3) White RAL9010, (.5) Brown RAL8014, (.AL) Aluminium painted, (A) Aluminium anodized, (KR) Korten painted

Angolo interno preformato Preformed internal angle	Angolo esterno preformato Preformed external angle	Terminale in alluminio Aluminium end piece	Scatola di derivazione Derivation box	Torretta 8 moduli 8 modules turrets	Torretta 8 moduli autoportanti 8 self-supporting module turret	Torretta 6 moduli 6 modules turrets
			KPD.1 KPD.2 KPD.3 KPD.5 KPD.AL	KP2504.1 KP2504.2 KP2504.3 KP2504.AL KP2504.KR	KP2504L.2 KP2504L.3 KP2504L.AL	KP503.1 KP503.2
KPI1873.3 KPI1873A	KPA1873.3 KPA1873A	KPE1873A				



### Torretta porta apparecchi bifacciale 3+3 moduli Bifacial socket box 3+3 modules

Articolo Item	A mm	B mm	C mm	D mm
<b>KP503</b>	150	140	135	83,5

### Torretta porta apparecchi bifacciale 4+4 moduli Bifacial socket box 4+4 modules

Articolo Item	A mm	B mm	C mm	D mm
<b>KP2504</b>	200	140	135	108,5